

3.4 odd answers

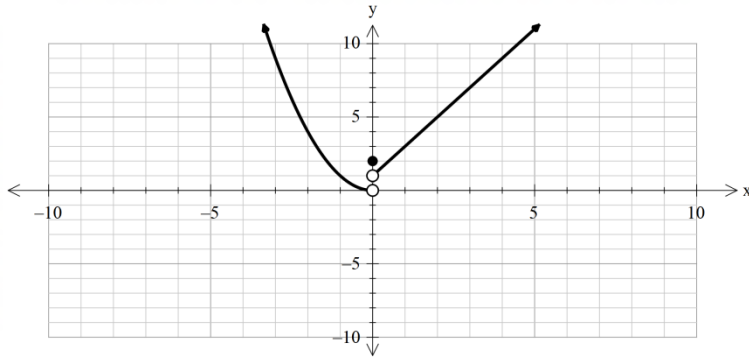
1. g, linear

3. h, greatest interger

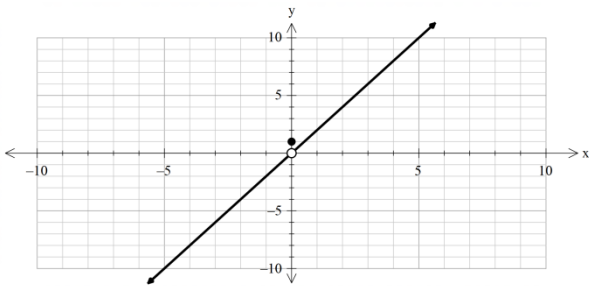
5. e, cube root

7. f, absolute value

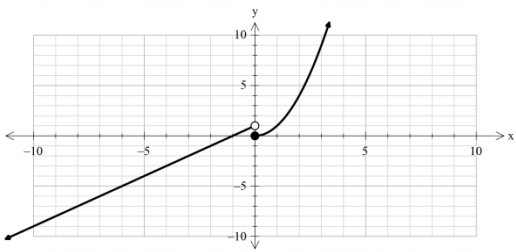
9.



11. a) Domain: $(-\infty, \infty)$ b) Range: $(-\infty, 0) \cup (0, \infty)$ c) Intercepts: (0,1) , no



13. a) Domain: $(-\infty, \infty)$ b) Range: $(-\infty, \infty)$ c) Intercepts: (-1,0) (0,0) , no



15. $f(x) = \begin{cases} -x, & -1 \leq x < 0 \\ \frac{1}{2}x, & 0 \leq x \leq 2 \end{cases}$ one possible answer

17. $x = 1$

19. $x = 1$, $x = -2$ extraneous